

NUTS AND BOLTS

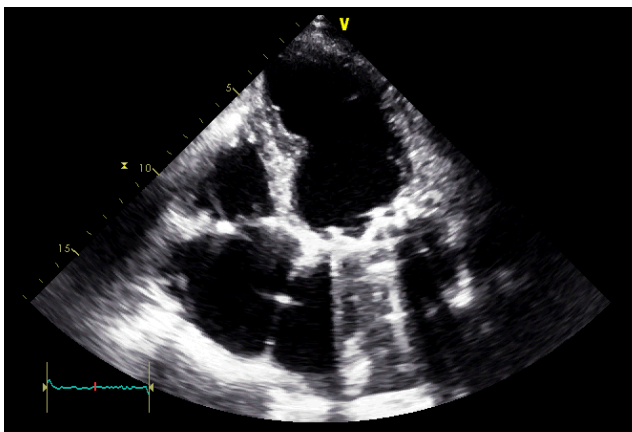
Recognizing artifacts

An artifact can make it look like there is something present that isn't there, or it may hide structures from being seen. If you suspect an artifact, try one of the following:

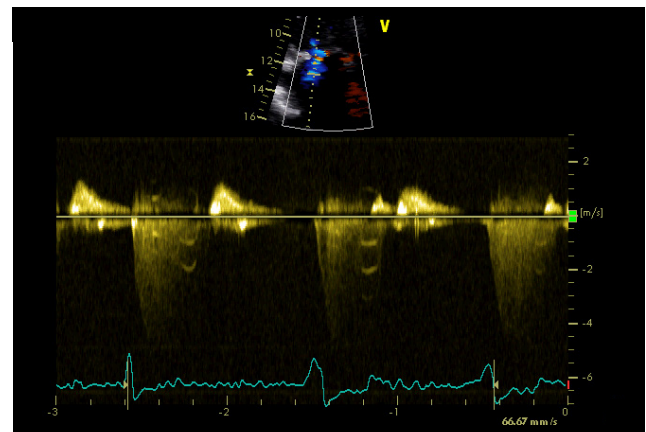
- Image from other views.
- Alter the machine settings.
- Observe whether it looks and moves physiologically.

Artifacts are particularly likely when there is material within the scanning zone which is unlike normal cardiac tissues, such as a pacing lead, replacement valve, air, or calcium. Typically, returning echoes

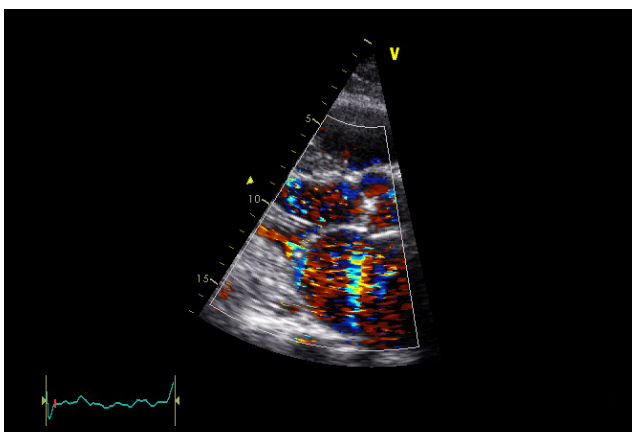
are interpreted incorrectly because the normal assumptions about the behavior of ultrasound in the body do not apply.



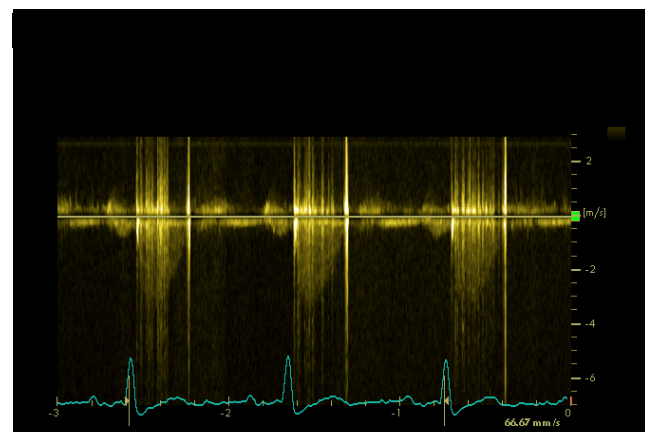
Prosthetic mitral valve



Doppler artifacts



Comb artifacts



Prosthetic aortic valve